



Article :

**A-280**

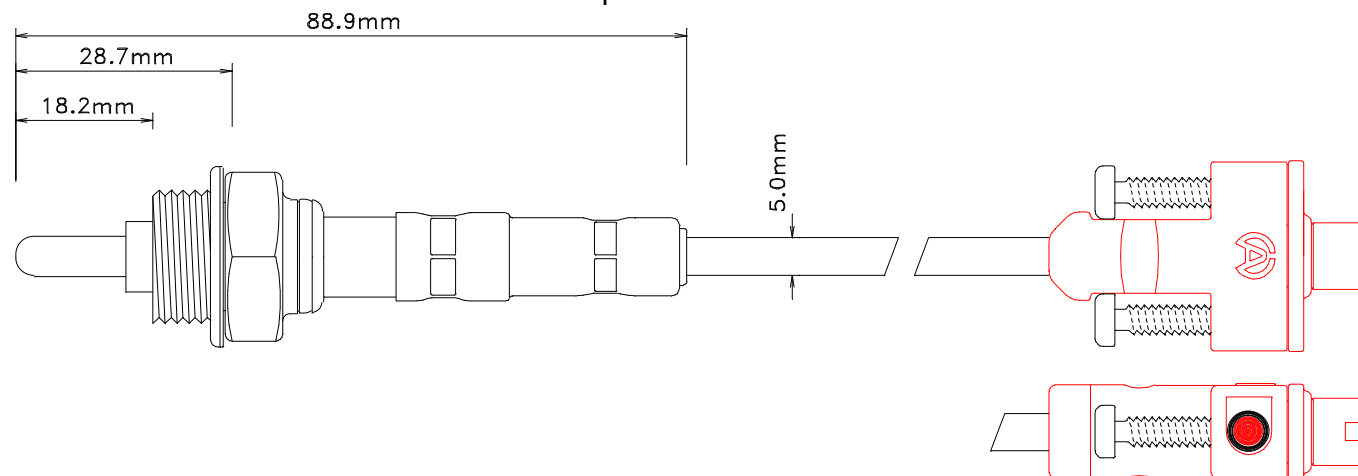
### LAMBDA Sensor

Application : Measure the combustion fertility to the exhaust

Maximum Temperature : 1.200°C / 2.192°F

Length : **40cm / 15.7inch**

Important note : This sensor must be used with a K type extension



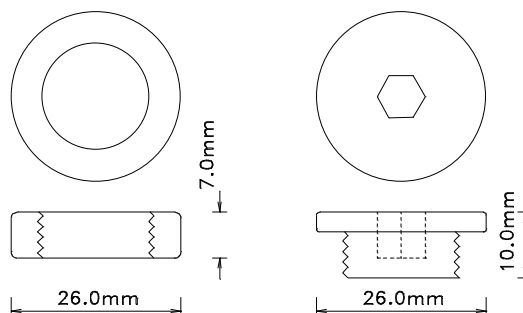
Connector : **Red**

Sticker : **Red**

Type : **Male**

### Accessories supplied :

- 3 Nuts + 2 Let's plug



## **Extensions**

**A-371**

L : 115cm (Karting, Motorcycle, Car)

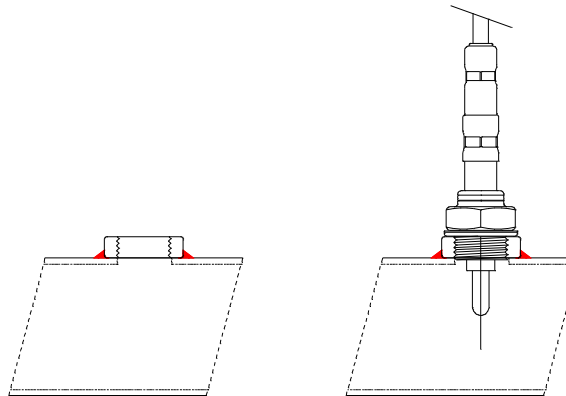
**A-372**

L : 250cm (Car)

## **Installation**

The temperature sensor (EGT) must be positioned in the tube of exhaust at a distance of 150mm (5.9inch) from the engine exit.

- 1) Drill a hole of diameter 18mm (0.70inch).
- 2) Weld the nut supplied.
- 3) Fix the sensor with a flat key of 22mm (don't tighten too strong).

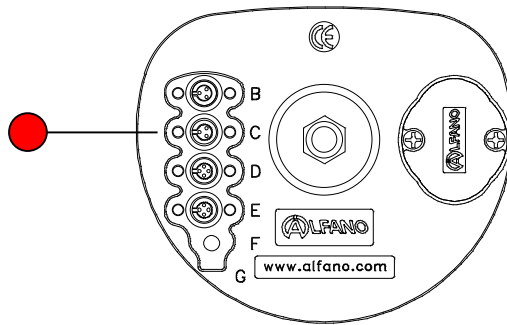


**ATTENTION** : When fixing, take care to move away the most possible the wire of this sensor from the other wires, mainly from the type : RPM, high tension of the ignition system wires, to avoid reciprocal interferences.

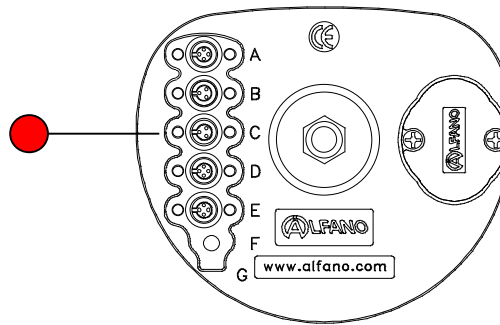
## **Adjustings**

**Attention :** use exclusively the entry « C »

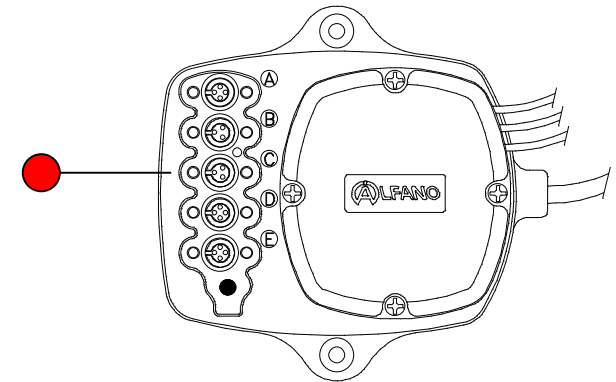
PRO+ LV / A-145



AStrO LV / A-155



AStrO fomula LV / A-165



We apply a method of continuous development. Therefore, we reserve the right to bring changes and improvements to all products described in this document, without preliminary notice. Consult our website regularly [www.alfano.com](http://www.alfano.com) in order to be informed of the last news and/or changes.